

L. PARKER STEPHENSON
PHOTOGRAPHS

AIPAD

April 10 – 13, 2014

1. **Eugene ATGET** (1857-1927)
Grand Trianon (Escalier), 1905
Albumen print
Print and image size: 8 7/8 x 7 inches
Title and negative number (6989) in pencil on print verso, other notations in later hand on print verso.
(P1471EA)



2. **Eugene ATGET** (1857-1927)
Meaux Ancien Cloître des Chanoines, 1910
Albumen print
Print and image size: 7 x 8 1/2 inches
Stamped with artist's "Campagne – Première" stamp, title and negative number (6706) in pencil on print verso, other notations in later hand on print verso
(P1473EA)



3. **Eugene ATGET** (1857-1927)
Escalier 13 quai d'Anjou, 1900
Albumen print
Print size: 8 3/4 x 7 inches
Title and negative number (4479) in pencil, other notations in later hand on print verso.
(P1477EA)



4. **John COHEN** (b. 1932)
Ethel & Roscoe Holcomb Beside Their Home, Daisy, KY, 1959
Gelatin silver print, printed 2012
Paper size: 11 x 14 inches
Image size: 8 3/8 x 12 5/8 inches
Signed, titled and dated in pencil on print verso.
(P1198JC)



5. **John COHEN** (b. 1932)
Jack Elliott & Woody Guthrie, 1961
Gelatin silver print, printed later
Paper Size: 11 x 14 inches
Image size: 8 1/2 x 12 3/4 inches
Signed, titled and dated in pencil on print verso.
(P1355JC)



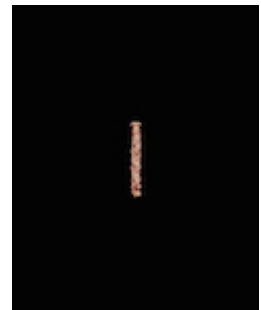
6. **John COHEN** (b. 1932)
Holiness Service in a House, Daisy, KY, 1962
Gelatin silver print, printed later
Paper Size: 11 x 14 inches
Image size: 8 3/8 x 12 1/2 inches
Signed, titled and dated in pencil on print verso.
(P1199JC)



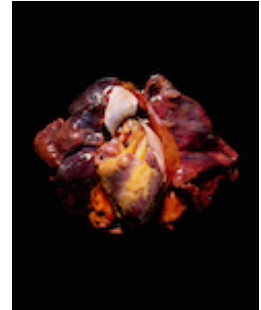
7. **John COHEN** (b. 1932)
Robert Frank, 1957
Gelatin silver print, printed 2011
Paper size: 11 x 14 inches
Image size: 8 3/8 x 12 3/8 inches
Signed, titled and dated with negative and print dates in print verso.
(P1241JC)



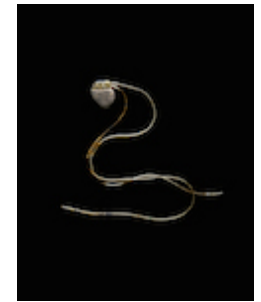
8. **Raphaël DALLAPORTA** (b. 1980)
Domestic Accident, Spinal Cord, (from Fragile series), 2010
Dye transfer print, printed 2012
Edition 2/3
Paper size: 20 x 16 inches
Image size: 17 1/2 x 14 inches
Signed, titled and editioned in pencil on print verso.
(P1723RD)



9. **Raphaël DALLAPORTA** (b. 1980)
Murder- Cardiopulmonary, (from Fragile series), 2010
Dye transfer print, printed 2012
Edition 2/3
Paper size: 20 x 16 inches
Image size: 17 ½ x 14 inches
Signed, titled and editioned in pencil on print verso.
(P1726RD)



10. **Raphaël DALLAPORTA** (b. 1980)
Pacemaker, (from Fragile series), 2010
Dye transfer print, printed 2012
Edition 1/3
Paper size: 20 x 16 inches
Image size: 17 ½ x 14 inches
Signed, titled and editioned in pencil on print verso.
(P1730RD)



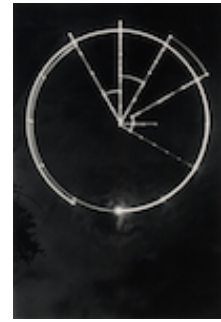
11. **Florence HENRI** (1893-1982)
Portrait Composition, 1930-1935
Gelatin silver print, printed c. 1935
Print and image size: 11 ¼ x 9 ⅛ inches
Flush mounted onto light board. Signed in pencil with 91 or 21 circled in pencil on print verso.
(P1481FH)



12. **IZIS** (1911-1980)
Jardin des Tuilleries, Paris, 1947
Gelatin silver print, printed c. 1947
Paper size: 11 x 8 5/8 inches
Image size: 11 5/8 x 8 inches
Signed, titled and dated, "Tirage par Izis" in artist's hand in pencil with photographer's credit stamp and reproduction stamp on print verso.
(P0285IZ)



13. **Kikuji KAWADA** (b. 1933)
Artificial Moon Trail, Tokyo, (from Last Cosmology series) 1969
Gelatin silver print, printed 1970
Paper size: 19 3/4 x 16 inches
Image size: 18 1/2 x 12 1/2 inches
Signed, titled and dated with other notations "18" "up", "Tmmp"
and "321:474mm" in pencil on print verso. Artist stamp in margin
on recto. Different title [Lunar Orbits, Tokyo, 1970] and date on
back of print verso.
(P1737KK)



14. **Kikuji KAWADA** (b. 1933)
A Ponytail and a Thunderbolt, Tokyo, (from Last Cosmology series),
1992
Gelatin silver print, printed 1992
Paper size: 24 x 20 inches
Image size: 15 1/2 x 15 1/2 inches
Signed, titled and dated with other notations "Tmmp", "up", "59"
and "394.5:396mm" in pencil on print verso. Artist stamp to
margin on print recto.
(P1743KK)



15. **Kikuji KAWADA** (b. 1933)
The Greenhouse Cultivation, Tokyo, (from Last Cosmology series),
1994
Gelatin silver print, printed 2002
Paper size: 24 x 19 3/4 inches
Image size: 19 1/2 x 15 1/2 inches
Signed, titled and dated with other notations "Tmmp", "12" and
"492=397mm" in pencil on print verso. Artist stamp to margin on
print recto.
(P1742KK)



16. **Kikuji KAWADA** (b. 1933)
Water Controller, Kanuma, Tochigi, (from Last Cosmology series),
1991
Gelatin silver print, printed 2002
Paper size: 23 1/2 x 20 inches
Image size: 21 x 14 inches
Signed "The Last Cosmology '95", titled and dated with other
notations "363: 5395mm", "3" "print K.K. Nov 2002", "Tmmp",
"Tochigi Pref" and "up" in pencil on print verso.
(P1739KK)



17. **Sirkka-Liisa KONTTINEN** (b. 1948)
Strange Girls, (from Hoppings series), 1976
Gelatin silver print, printed by the photographer in 2012
Print size: 16 x 20 inches
Image size: 10 ¼ x 15 ¼ inches
Signed, titled and dated with image date and
"printed by Sirkka-Liisa Konttinen" in pencil on print verso.
(P1293SLK)



18. **Sirkka-Liisa KONTTINEN** (b. 1948)
Ron Taylor's Wrestling and Boxing, (from Hoppings series), 1972
Gelatin silver print, printed by the photographer in 2012
Print size: 16 x 20 inches
Image size: 10 ¼ x 15 inches
Signed, titled and dated with image date and
"printed by Sirkka-Liisa Konttinen" in pencil on print verso.
(P1294SLK)



19. **Sirkka-Liisa KONTTINEN** (b. 1948)
Whitley Bay, (from Writing in the Sand series), 1978
Gelatin silver print, printed by the photographer c. 1990
Print size: 20 x 16 inches
Image size: 16 ¾ x 11 inches
Signed, titled and dated in ink (ball point pen) on print verso.
(P1363SLK)

